



South West Chilterns Community Board Meeting

Chairman Cllr Mark Turner

Vice Chairman Cllr Carol Heap

4 October 2023

Lane End Youth and Community Centre



Agenda

Chairman's Welcome

Apologies for absence

Declarations of Interest

Notes of Last Meeting

Presentation – Rural Crime across the Board - TVP

Presentation – Fighting for Survival vs Diversification – Alex Nelms and Ted Howard-Jones

Presentation – The Hedgerow Project – Nick Marriner, Chiltern Conservation

Community Matters:

Buckinghamshire Council Corporate Update – Tony Ellis – Service Director,

Buckinghamshire Council

Funding update – Makyla Devlin – Senior Community Board Manager

Public questions received in advance – to be presented by the Chairman

Any Other Business

Date of the next meetings – 14 February 2024 – (location and venue to be confirmed)



Rural Crime Across the Board

ii



Community Board

04th October 2023

Lane End

PC Robinson P4571, PCSO Shraga C8632, PCSO Cydzik C0146

What is Rural Crime?

- ▶ TVP Definition of rural crime;
- ▶ Agricultural crime constitutes any statutory or common law offence which may be committed against people in agricultural communities, their lands, businesses and property (property includes plant and agricultural machinery and animals such as livestock and horses).
- ▶ Environmental crime constitutes an illegal act which directly harms the environment. This element of the strategy will be largely delivered by supporting partner agencies.
- ▶ Heritage crime constitutes any offence which harms the value of heritage assets and their settings.
- ▶ Wildlife crime constitutes any unlawful act or omission, which affects any wild creature, plant or habitat.

The Statistics

01/01/2023 - Present

- ▶ Agricultural Crime;
 - ▶ 7 Burglaries residential and business
 - ▶ 4 Criminal Damage
 - ▶ 2 Dangerous Dogs
 - ▶ 2 Public Order Offences
 - ▶ 5 Theft
- ▶ Environmental Crime
 - ▶ 1 Flytipping
- ▶ Heritage Crime
 - ▶ No Reports made.
- ▶ Wildlife Crime;
 - ▶ 4 Misc Wildlife Crimes
 - ▶ 6 Hare Coursing

What We Do

- ▶ Neighbourhood Police Teams
 - ▶ Awareness
 - ▶ Have your say meetings
 - ▶ Tool marking
 - ▶ Hotspot patrols
 - ▶ Signage
- ▶ Rural Crime Taskforce
- ▶ Horse Watch
 - ▶ Marking of equipment
 - ▶ Lost/escaped horses
- ▶ Country Watch Packs

Questions

The background features abstract, overlapping geometric shapes in various shades of blue, ranging from light sky blue to deep navy blue. These shapes are primarily located on the right side of the slide, creating a modern, layered effect. The rest of the slide is a plain white background.



Fighting for Survival via Diversification

Alex Nelms

Ted Howard-Jones



Fighting for Survival

via rural diversification

Agenda

Setting the scene - the average farm

Why we need to diversify

Some diversification success stories

What's working - and what's not

How you can help

Why is agriculture important?


Agriculture provides half of the food we eat, employs almost half a million people and is a key part of the food and drink sector.

In 2021, farmers and land managers managed 71% of the UK's land, and through them we can safeguard our natural environment and ensure the highest standards of animal and plant health.

Many farmers and landowners are actively playing their part to conserve and enhance the countryside's wide network of trees, hedgerows, ponds, ditches and other watercourses.

Source - Govt. Evidence pack





NO FARMER, NO FOOD

49% of British veg farmers fear closure in the next year. Supermarkets are a leading cause.

GET
FAIR ABOUT
FARMING

SIGN THE PETITION ►

RIVERFORD
ORGANIC FARMERS

Average Farm UK

Farm Size - 200 Acres

Age of farmer - 59

As % of Turnover

- Agriculture - 81%
- Diversification - 8%
- Grants - 12%

Average Income - £50K

Cholsey Grange Farm

Farm Size - 198 Acres

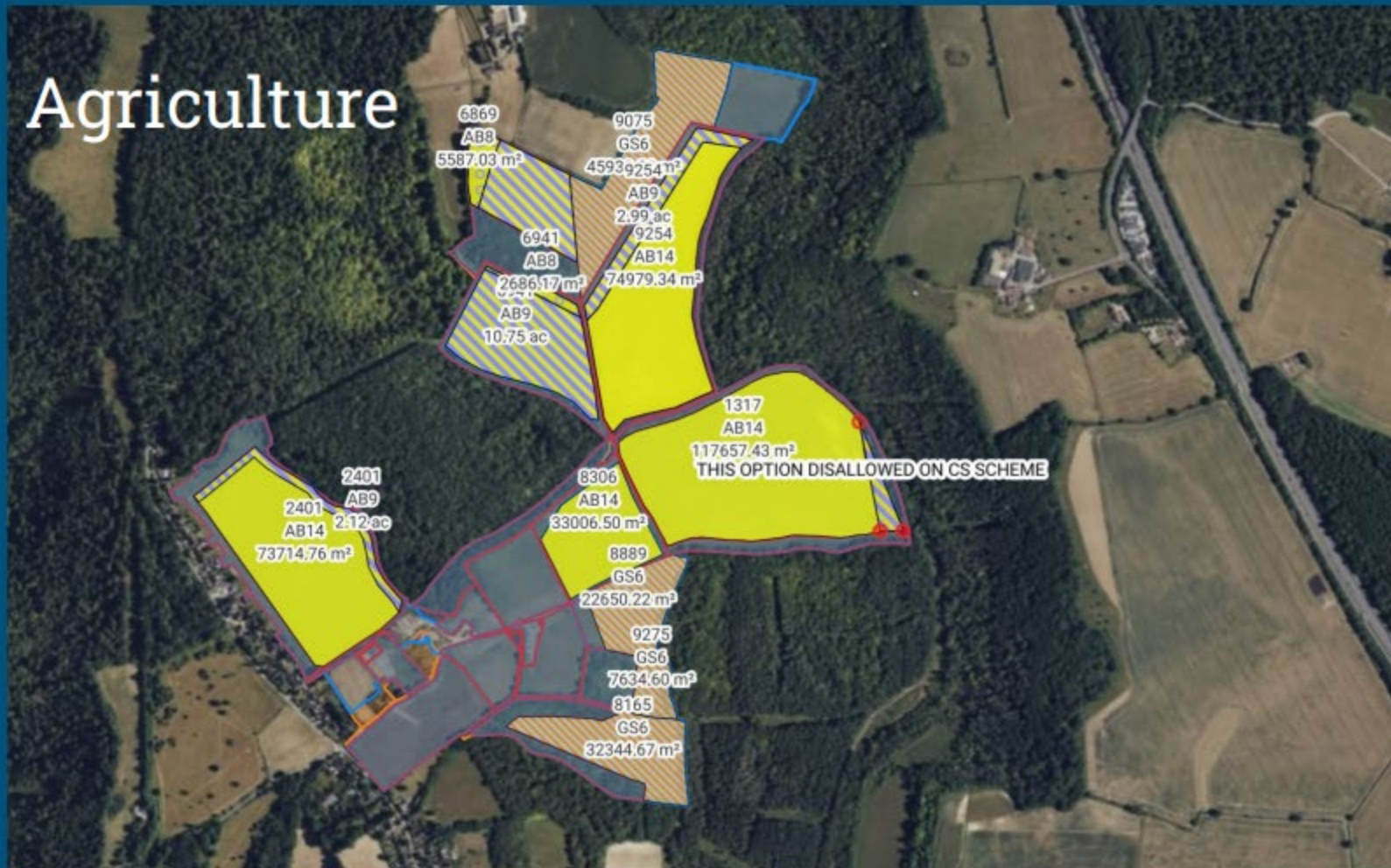
Age of farmer - 60

As % of Turnover

- Agriculture - 16%
- Diversification - 76%
- Grants - 8%

Income - circa £100K

Agriculture

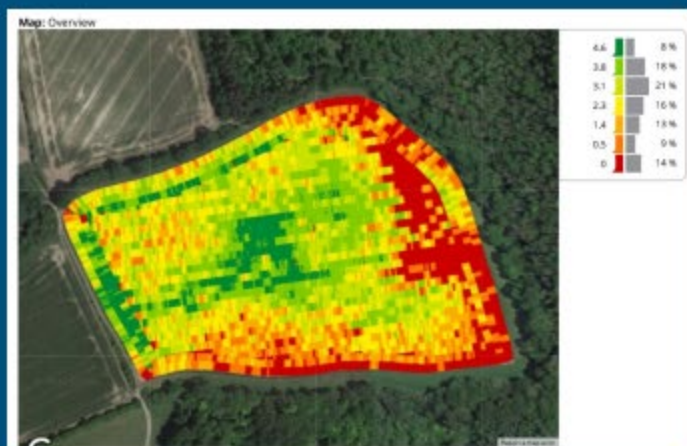


Farming in the Chilterns doesn't pay!

Agriculture Balance Sheet	2019	2020	2021	2022	4 yr Avg
Contractor	£15,819	£11,425	£11,572	£13,361	£13,044
Seeds/Spray Fert	£12,397	£14,371	£18,816	£16,425	£15,502
Sub Total	£28,216	£25,796	£30,388	£29,786	£28,547
Crop Sales	£28,490	£30,389	£27,233	£27,334	£28,362
Agriculture Profit/Loss	£274	£4,593	-£3,155	-£2,452	-£185

Reasons

- Poor soil (low natural fertility)
- Difficult to improve the soil (Manure / Sewage Sludge)
- Elevation
- Steep
- Deer damage



The deer problem

In the 1970's there were 300-400K deer in the UK

There are now estimated to be more than 2 Million deer.

Fallow deer are a non-native species and prevalent in many areas of the Chilterns.

They cause road-traffic accidents and massive damage to hedgerows, young trees, woodland understory and farmers crops.





An aerial view of Cholsey Grange Farm taken in 1969

1969

An aerial view of the farm showing many buildings that have since been demolished including the grain drier, chicken sheds, pig units, hay barn and workshops.

In the late 1950's and early 1960's Cholsey Grange Farm had pigs, chickens and sheep. The chicken enterprise numbered 7 large sheds (all now demolished) containing both egg-laying birds and birds for the table. They were fed from wheat grown on the farm and milled on-farm in our own processing mill.

Most notably, Hartmoor Wood (top right of the photo), then owned by Mr. John Fane of Wormsley was clear-felled. It has since regrown through natural regeneration and is now owned by Mr. Michael Wright.



An Aerial view of Cholsey Grange Farm taken in June 2009

2009

40 years later some of the outbuildings remain, many have been demolished or altered shape, whilst a couple of modern agricultural barns have replaced former pig unit and chicken sheds.

The new barns were built to store grain, straw and for lambing the 200-300 Welsh ewes.

Some of the old pigsties and workshops have been converted to offices whilst the old dairy is now home to a skilled cabinet-maker and storage.

The listed oak-framed barn was re-roofed with local, hand-made tiles. It now houses hay, logs and a tractor.

Hartmoor wood is regenerating and is now a mixed woodland with a lot of Ash trees.





An aerial view of Cholsley Grange Farm taken in 1969



An Aerial view of Cholsley Grange Farm taken in June 2009

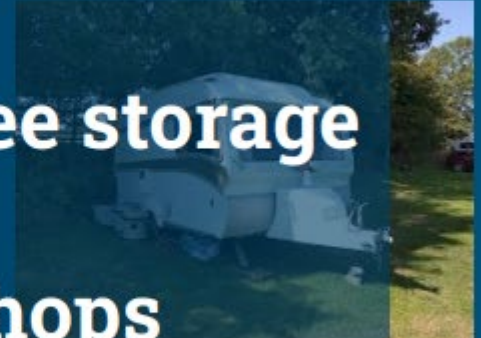
1969

An aerial view of the farm showing many buildings that have since been demolished including the pig shed, chicken sheds, hay barn and workshops.

In the late 1950's and early 1960's Cholsley Grange Farm had pigs, chickens and sheep. The chicken unit was numbered 14 (all now demolished) and the pig unit was numbered 15 (all now demolished). They were fed on a diet of home-grown potatoes and table. They were fed on a diet of home-grown potatoes and table. They were fed on a diet of home-grown potatoes and table. They were fed on a diet of home-grown potatoes and table.

Most notably, Hartm... Mr. John... through natural regeneration and is now owned by Mr. Michael Wright.

- 1970's Marquee storage
 - 1980's Offices
 - 1990's Workshops
 - 2000 Caravans
 - 2015 Horse riding
- Multiple income streams keep the farm afloat & help reduce risk**



What keeps us afloat?

Turnover

Commercial - 30%

Tourism - 28%

Agriculture - 24%*

Residential - 13%

Other - 5%

*Includes grants

Commercial

- Workshops
- Office
- Storage

Tourism

- Riding Holidays
 - Camping & Self catering
- Caravan Site (5 pitches)
- Park & Ride

Agriculture

- Wheat & Barley
- Stewardship
 - Winter Birdfood
 - Species Rich Grassland etc.

Residential

- Cottages

Other

- Consulting
- Wayleaves
- Shoot

Tourism in the Chilterns

Beautiful Countryside

[Book Now](#)



Amazing Hacking

The Chilterns 'Area of Outstanding Natural Beauty' (AONB) is the perfect

Choice of Routes

Over 15 different circular rides direct from our farm take you through lovely villages, through stunning scenery and past country pubs or cafe's where you might want to stop for a coffee or lunch.

Or simply ride round the wide grass margins on our farm. Well signed and plenty of lovely views and uphill canter opportunities. All off road.



Where our riders come from

Day Riders - 45-60 minutes



Holiday Makers 1.5 Hours



Tourism in the Chilterns

[Home](#) / [Certificated Locations](#) / [England](#) / [Buckinghamshire](#) / [Marlow](#) / [Cholsey Grange](#)

Cholsey Grange

Ibstone, High Wycombe, Buckinghamshire, HP14 3XT

[View on map](#)



Serviced pitches with free WiFi



from
£25.00

To book a pitch contact the site directly

[WEBSITE](#)

[EMAIL](#)

SITE OWNER: Mr and Mrs T Howard-Jones

CALL: 07740 298474

Price based on:
Please contact the site directly for details

Overall site rating

Based on 174 reviews



Tranquility

How lucky we were to discover this wonderful site whilst

Tourism in the Chilterns



The mediaeval barn is now heated by a large woodburner and can seat up to 80 diners.

Covered outside seating for up to 70.

Please note there is no takeaway option

BOOKING IS ESSENTIAL..... EVEN FOR A DRINK
this is to allow a steady flow of customers for seating and ordering

Please use the booking links on the [Reservations](#) page to make your booking.

If you experience any issues please call us direct on

01491 638213

No need to preorder just get a slot so that we can regulate numbers

What works in Bucks

Rural Forum

Bucks Business First

Chilterns Tourism network

Grants schemes eg LEADER and (we hope) the Rural Prosperity Fund

What could be better

In a word - Planning

Most farmers wishing to diversify either curtail their business ideas or put off their schemes due to worries about planning that they see as;

- Time Consuming - Overly Complex - Expensive Tick Boxes (eg Flood Risk assessments) . Disingenuous.
- The average farmer doesn't have the money or risk appetite for a lengthy planning battle. Hence if farmers want to take the risk they start projects without planning and ask for forgiveness later eg Retrospective.
- Planning is required for all the Grant schemes, but is so slow that many grant deadlines are missed. But Planning dept. seem to be deaf to economic / diversification arguments



Will Dallimore

Has many examples of rural projects that have never gone ahead due to planning issues.

He estimates £5M of grant funding not approved due to PP

Planning fees

Government estimates that the current funding shortfall for the planning service in England is £225M a year.

***Planning fees are set to rise this month
by between 25% and 35%.***

Source: CLA Magazine Oct 2023

A local success story



Laceys Family Farm

Farm Shop and Butcher's

Opening Times:

Tuesday - Friday: 8:30am - 3pm

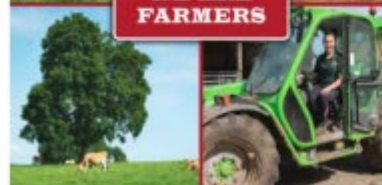
Saturday: 8:30am - 4pm

Sunday: 10am - 3pm

Monday: Closed



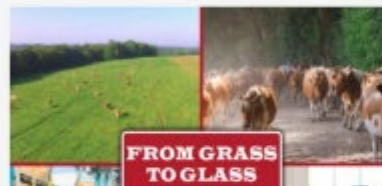
Our farm shop is packed with fresh produce, produced on our own farms in the Chilterns, 20000 or so other local farms.



We farm 450 acres in the beautiful Chiltern Hills in South Buckinghamshire



Our farm shop sells meat produced on our farm and neighbouring farms. Our Butchers shop will cut your joints to order



Contact

Ted Howard-Jones

Cholsey Grange Farm

07740-298-474

ted@countrysidemarketing.co.uk



The Hedgerow Project

Nick Marriner

Chiltern Conservation





CHILTERNs

LANDSCAPE PARTNERSHIP



Build relationships, trust, confidence, capacity and a baseline

Increasing the number of hectares in active and positive management

Habitat conditions improve

Landscape-scale change and species recovery

Year 1 - 3



Year 3 - 5



Year 5



Year 10



Farmers driving Natures Recovery in the Chilterns AONB



Supported by the Farming in Protected Landscapes Scheme

Chilterns Farmer Cluster Hedgerow Restoration Project










Chilterns Conservation Board
851 subscribers



Chalk, Cherries & Chairs

Chilterns Conservation Board - 34/54



- 31  32:46 Chilterns Conservation Board
- 32  3:07:45 Tracking the Impact 2021 Programme Review -... Chilterns Conservation Board
- 33  5:08 Chilterns New Shoots - young nature enthusiasts share thei... Chilterns Conservation Board
-  8:31 Chilterns Farmer Cluster Hedgerow Restoration Project Chilterns Conservation Board
- 35  3:06 ITV Meridian's report on Chilterns farmer Andrew... Chilterns Conservation Board
- 36  8:14 The National Hedgelaying Championships, 29th Oct 202... Chilterns Conservation Board
- 37  IN THEIR OWN WORDS: Victorian Child Lacemakers o...

WIX.com | Create Your Site 

[\(19\) Chilterns Farmer Cluster Hedgerow Restoration Project - YouTube](#)

Wildlife habitat improvement taking place here this winter

An exciting project is underway to create and restore wildlife habitats across the Chilterns. The Chilterns Conservation Board is working with farmers at a landscape scale to improve and connect wildlife habitats.

At Lacey's Farm hedgerow habitat is being increased and improved to encourage natural re-colonisation of rare birds, small mammals, invertebrates, reptiles and amphibians. Across the farm old hedgerows are being rejuvenated by cutting out overgrown and dead wood and planting new saplings in the gaps.

This hedgerow work is part of a plan to maximise valuable wildlife habitat across the whole farm.



For more information see www.chilternsaonb.org/projects/CCC



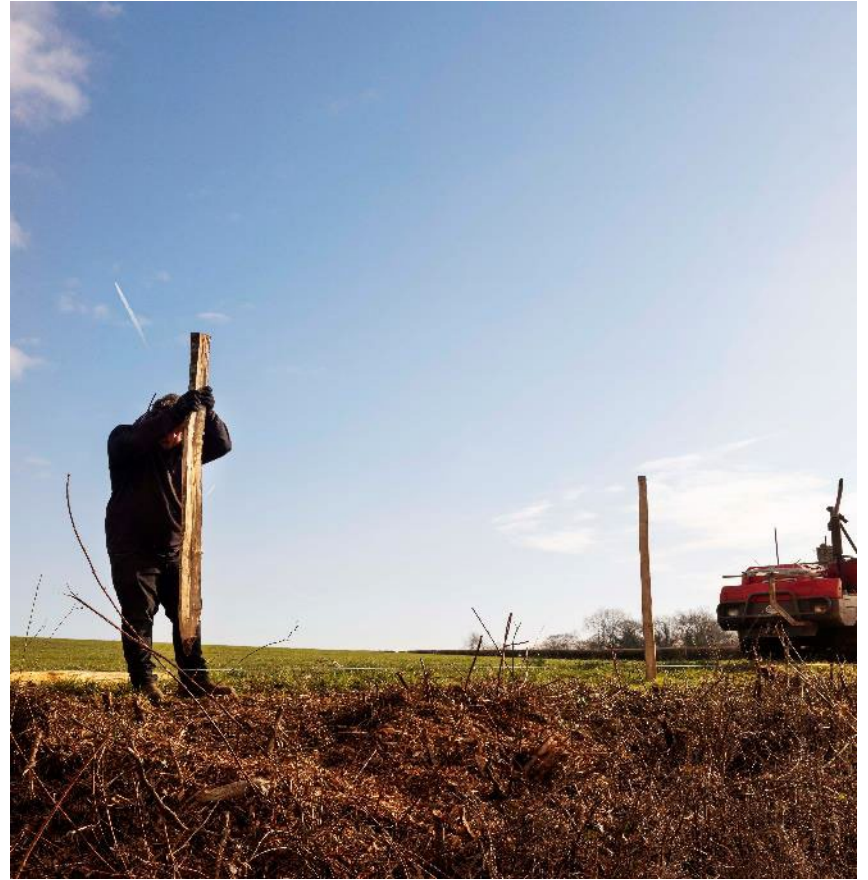
- Planting - 2,059m
- Coppicing - 1,092m
- Fencing - 2,360m
- £41,608 FiPL, NLHF, Farmer
- 5,367 kg CO₂















ROTHSCHILD
FOUNDATION



Farm
Carbon
Toolkit



Farm Carbon
Toolkit

Farm Carbon Toolkit
Soil sampling and
carbon footprinting

Initial results and feedback session

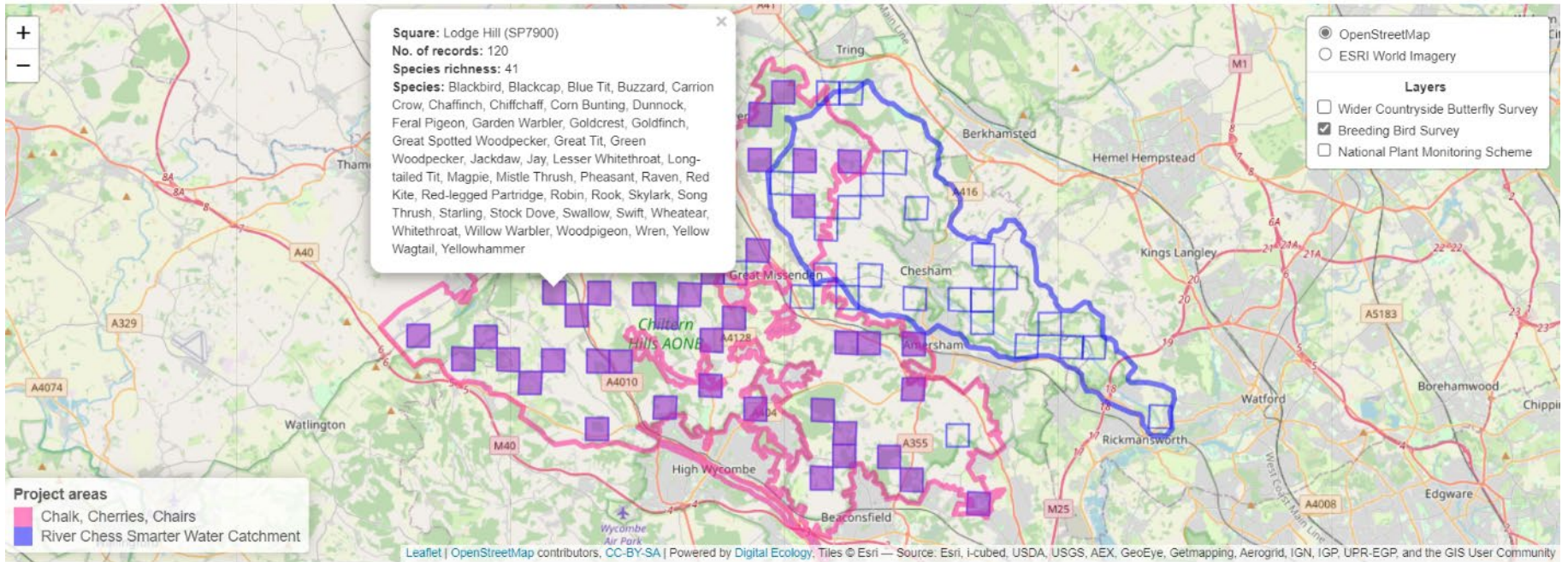
Becky Wilton
19 November 2021





ROTHSCHILD FOUNDATION

- **Advice** - paid for advice for arable & livestock farms on soil health projects
- **Consultancy** - support for applications SFI (e.g., soil health standard)
- **Baselines** - paid for soil sampling across whole farm/targeted fields
- **Trialling new techniques** - e.g., cover cropping, paid for contractor direct drilling
- **Shared projects** - e.g., sourcing grazing for cover crops
- **Training** - e.g., sourcing grazing for cover crops
- **Mentoring** - e.g., 1:1 peer support, Pasture for Life
- **Landscape scale** - planning, monitoring of impact across a wider scale





[Advanced company search](#)

CENTRAL CHILTERNNS FARMER CLUSTER CIC

Company number **15130165**

Follow this company

File for this company

Overview

[Filing history](#)

[People](#)

[More](#)

Registered office address

**Kensham Farm Cadmore Common, Cadmore End, High Wycombe,
England, HP14 3PR**

Company status

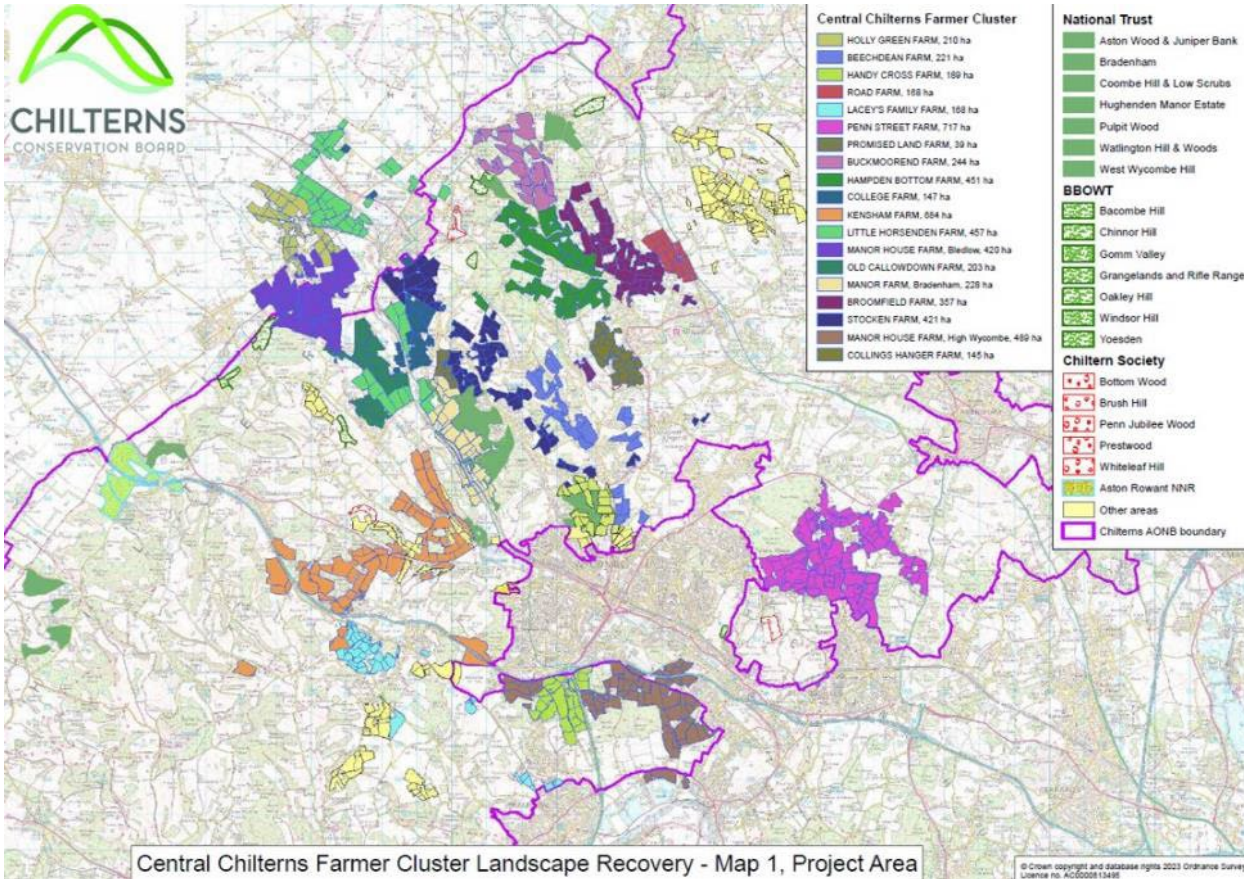
Active

Company type

Private company limited by guarantee without share capital
Community Interest Company (CIC)

Incorporated on

11 September 2023



Central Chilterns Farmer Cluster Landscape Recovery - Map 1, Project Area



Community Matters

Buckinghamshire Council Corporate update – Tony Ellis, Service Director

Funding Update – Makyla Devlin, Senior Community Board Manager

Public Questions – received in advance – Chairman Cllr Mark Turner.





Corporate Update

Tony Ellis

SWCCB Service Director Champion





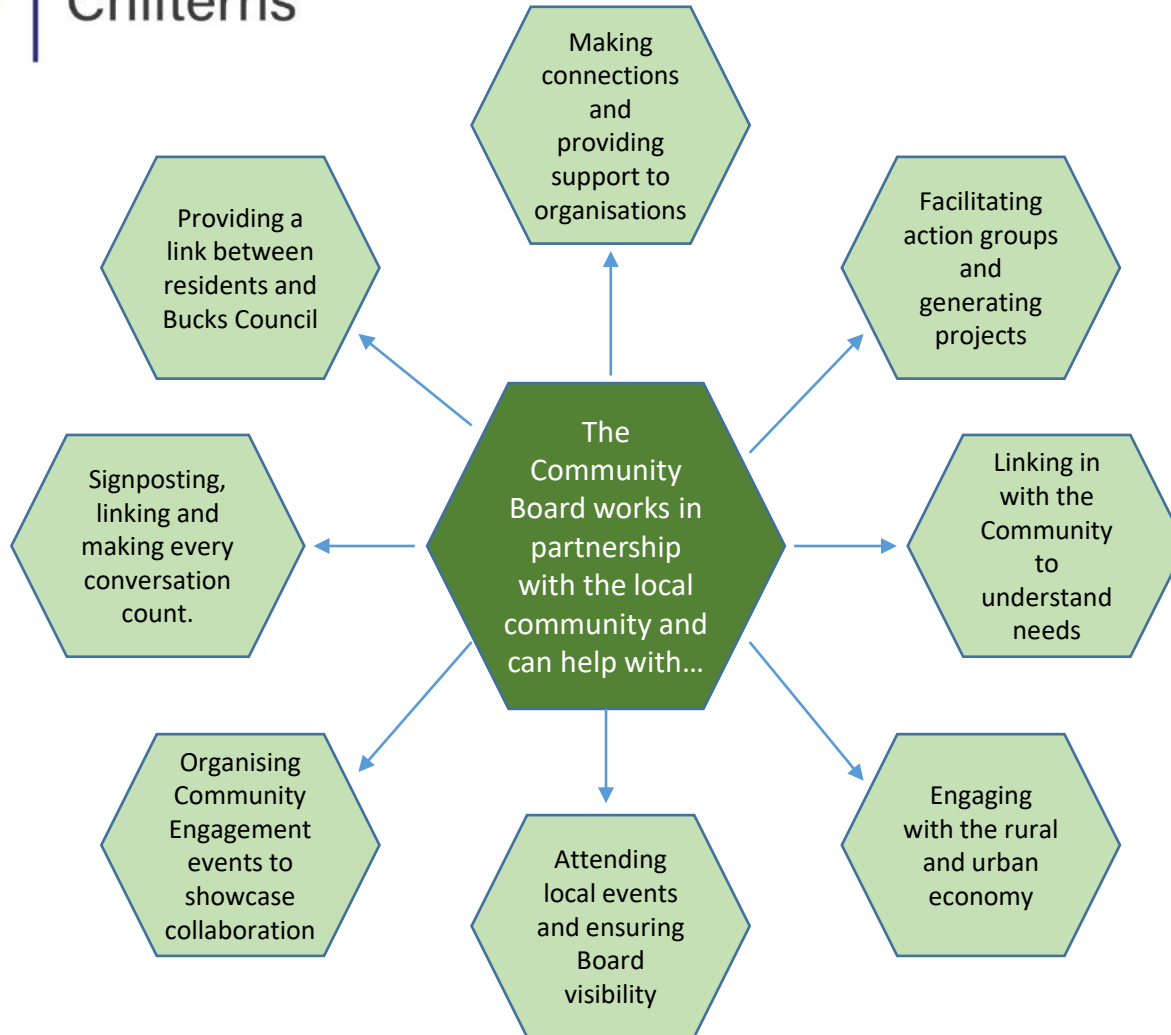
Community Board South West Chilterns

- The Community Board Manager links in with the local community groups and locations on a weekly basis
- Looking to hold weekly drop-ins at both Marlow and Bourne End Libraries and other partnership locations including Parish Councils
- Engaging with community groups through their localised events
- Developing the Community Board Facebook page
- The creation of a Board newsletter is currently underway
- During 2023 so far, South West Chiltern Community Board has funded 4 community projects with 1 being processed through the internal due diligence process with further applications in the pipeline along with 3 highways schemes which have been identified for funding and are still under discussion.
- 2023/2024 budget is £116,402
- There are 4 active and engaging action groups, Community Health and Wellbeing, Economic Development, Urban and Rural, Environment and Climate Change and Highways and Infrastructure. Everyone is welcome to attend the action groups. For further details, please contact Makyla makyla.devlin@buckinghamshire.gov.uk



Community Board

South West Chilterns





Funding Update

Makyla Devlin

Senior Community Board Manager



Funding Summary Report
South West Chilterns Community Board
04 October 2023

This paper provides a summary of the funding applications received, considered or in the pipeline for your information.

The table below details the current budget position for the South West Chilterns Community Board.

Community Board Fund 23/24	Spend to date (04/10/2023)	Allocated or potential projects to date (04/10/2023)	Remaining budget as of 04/10/2023
£116,402	£11,180.75	£72,316	£32,905.25



Any Other Business?





Dates of Next Meeting

The South West Chiltern Community Board next Meeting will be on:

14 February 2024 – (location and venue to be confirmed – looking at options to change the date)

